

Producer members

Producers offer mainland UK coverage unless otherwise stated

Anglian Lime Company 01787 313974
www.anglianlime.com

Breedon Aggregates 01332 694000
www.breedonaggregates.com

CEMEX UK Materials Ltd 01932 568833
www.cemex.co.uk

Cornish Lime Company 01208 79779
www.cornishlime.co.uk

CPI Mortars Ltd 0845 850 9090
www.euromix.com

Hugh King & Co 01294 557515
www.hughking.co.uk

John Carr (Liverpool) Ltd 0151 2070067
(Liverpool)

Marshall's Premier Mortars 0345 3013030
www.marshall's.co.uk/premiermortars

Mortar and Screed Company Ltd 01952 224202
www.mortarandscreed.co.uk

Remix Dry Mortar 01329 231200
www.remixdrymortar.co.uk

RTU 02890 851441
www.rtu.co.uk (Belfast)

Tarmac 03701 116 116
www.tarmac.com

Watts Mix 01262 675383
www.wattsmix.com

High cement demand leads to mortar rationing

Present high demand from the construction industry for cement is meaning the factory-produced mortar industry is having to ration mortar supplies to some customers.

MPA Mortar manager, Mick Russell said: 'Many of our producer members are experiencing difficulties with supplies of cement due to unprecedented demand, but they should be able to resume their full service reasonably shortly.'

The Mineral Products Association, of which MPA Mortar is part, has issued the following statement:

'The majority of UK cement is made from locally-sourced raw materials which in general terms have not been affected to the same extent as mainly imported building materials. Production of cement can be increased to help to meet demand, but where demand exceeds

supply capacity, longer lead times may be expected. As production catches up it shouldn't be long before supplies are back to normal depending on how long this surge in pent up demand actually lasts and subject to transport availability.'

Housing minister, Rt Hon Chris Pincher MP opens the NHBC Hub in May.

Full details are on page two.

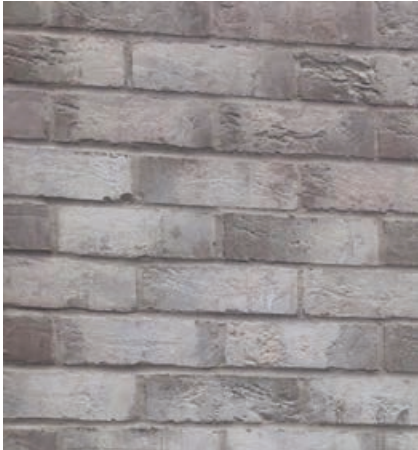
Spotlight on training brickies

Both the NHBC and the Association of Brickwork Contractors have launched their plans for increasing the numbers and skills levels of bricklayers, following high demand from the housebuilding and construction industries.

See page two for details.



CEMEX mortar aids barracks site regeneration



Brickwork incorporating the Dove White mortar.

A bespoke coloured, factory-produced mortar has been supplied by CEMEX to complement the shade of the bricks being used on part of the Preston Barracks regeneration scheme in Brighton, Sussex.

The Dove White, M4 natural mortar uses carefully-sourced raw materials to give its white appearance and consistency of shade. In total, some 2,500 tonnes of dry silo mortar has been supplied, through contractor, Henry Construction.

The £300 million regeneration project, on the Lewes Road, is a partnership between U+I, Brighton & Hove City Council and University of Brighton and will create a thriving new community on the old barracks site and adjoining university land. In addition to new homes by Optivo, which will deliver a mix of homes for private sale, affordable rent and shared ownership, there will be student accommodation, state-of-the-art academic buildings and space for new businesses.

Overall plans include a striking new footbridge over the Lewes Road, a boardwalk to the station, public squares, shops, cafes,

workshops, play spaces, landscaping and an outdoor fitness route.

It is reported that the mortar product has been highly consistent and exactly as per the sample panels originally cast.

An ABC answer to bricklaying

Demand from industry for more, better-skilled operatives has led to the Association of Brickwork Contractors (ABC) setting up a training programme of short duration courses through its assessment centre.

The courses include practical and theoretical experience in brick-slip systems, fire barriers, brick soffits, wind post installation and masonry support angles. Those taking part will have their training added to their Construction Skills Certificate Scheme cards, providing visible proof to current and future employers of their newfound expertise

The ABC Assessment Centre offers a total of 16 short duration courses, which include half-, one- and two-day programmes. Although aimed primarily at contractors and current employees, the training is being rolled out additionally in further education colleges.

Centre manager, Simon Livett, said: 'We believe ABC Assessment Centre courses will not only benefit the candidates themselves in terms of upgrading their skillset and boosting their career development, they will provide a filip for the bricklaying industry's reputation as a whole.'

NHBC opens new training hub



The covered area for practical work.

A new construction industry apprentice training hub has been opened in the West Midlands by the NHBC, supported by Redrow and Tamworth Borough Council.

The aim is to help develop the next generation of skilled tradespeople starting out in housebuilding. Located in Tamworth, the NHBC Training Hub is able to support over 100 apprentices annually. It has been designed to immerse apprentices in a realistic working environment, helped by the fact that

it has been built next to an active Redrow development. In layout, it resembles a typical site with a large covered central area for practical work, alongside high-specification classrooms and welfare facilities.

Bricklaying has been chosen as the initial focus because of the shortage of skilled bricklayers in the housebuilding sector.

Opening the new centre in May, the government housing minister, Rt Hon Chris Pincher MP, said: 'I am very pleased to open NHBC's Training Hub which will train the next generation of bricklayers and will help directly address the skills shortage in the house building sector. Apprenticeships and traineeships ensure people have the skills they need to get a well-paid job.'

NHBC chief executive, Steve Woods, said: 'It gives me great pleasure to be able to launch the new NHBC Training Hub. By doing so, NHBC is addressing vital skills' gaps in the industry and providing brand new employment opportunities for young people.' The first group of apprentices started at the hub at the end of May.



essential materials
sustainable solutions

Gillingham House
38-44 Gillingham Street
London, SW1V 1HU
Tel +44 (0)20 7963 8000
Fax +44 (0)20 7963 8001
info@mineralproducts.org
www.mortar.org.uk

MPA Mortar is part of the Mineral Products Association, the trade association for the aggregates, asphalt, cement, concrete, dimension stone, lime, mortar and silica sand industries.